

# Vents

## VUT(E) 80 P mini L/R

Air handling units for efficient supply and exhaust ventilation in flats, houses, cottages and other buildings.



# DESIGNATION KEY

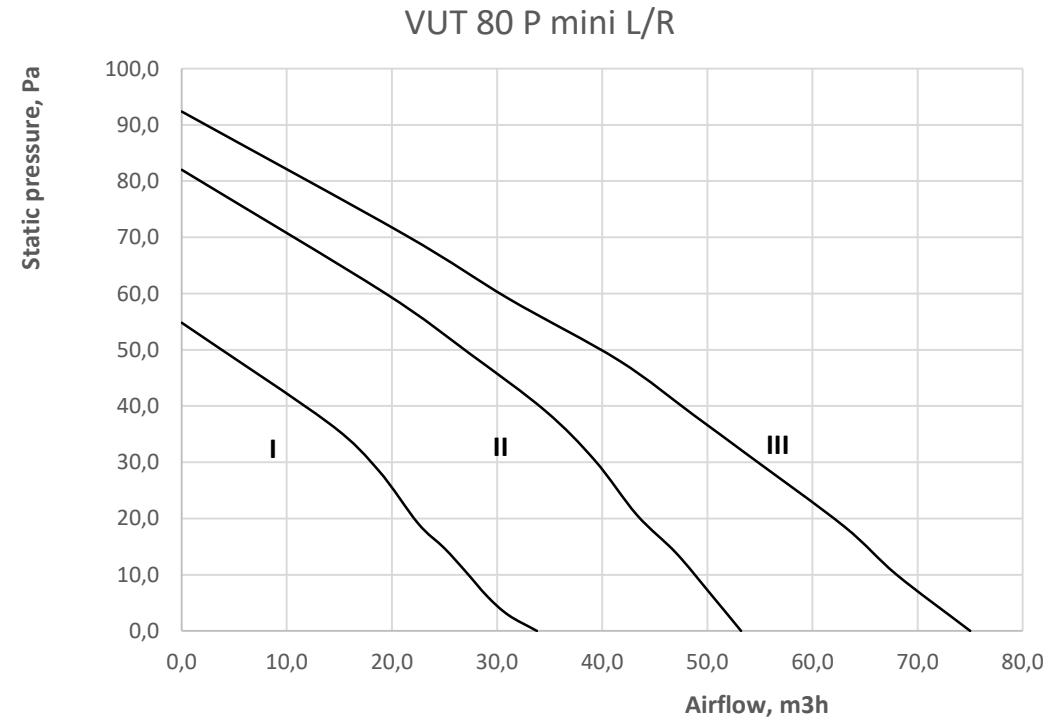
Series	Rated air flow [m <sup>3</sup> /h]	Mounting type	Frost protection	Unit type	Performance
<b>VUT:</b> heat recovery <b>VUE:</b> energy recovery	<b>80</b>	<b>P:</b> suspended mounting, horizontally	<b>_:</b> frost protection thermostat is on board <b>W:</b> without frost protection thermostat	<b>mini:</b> compact unit	<b>R:</b> right handed <b>L:</b> left handed

# Characteristics

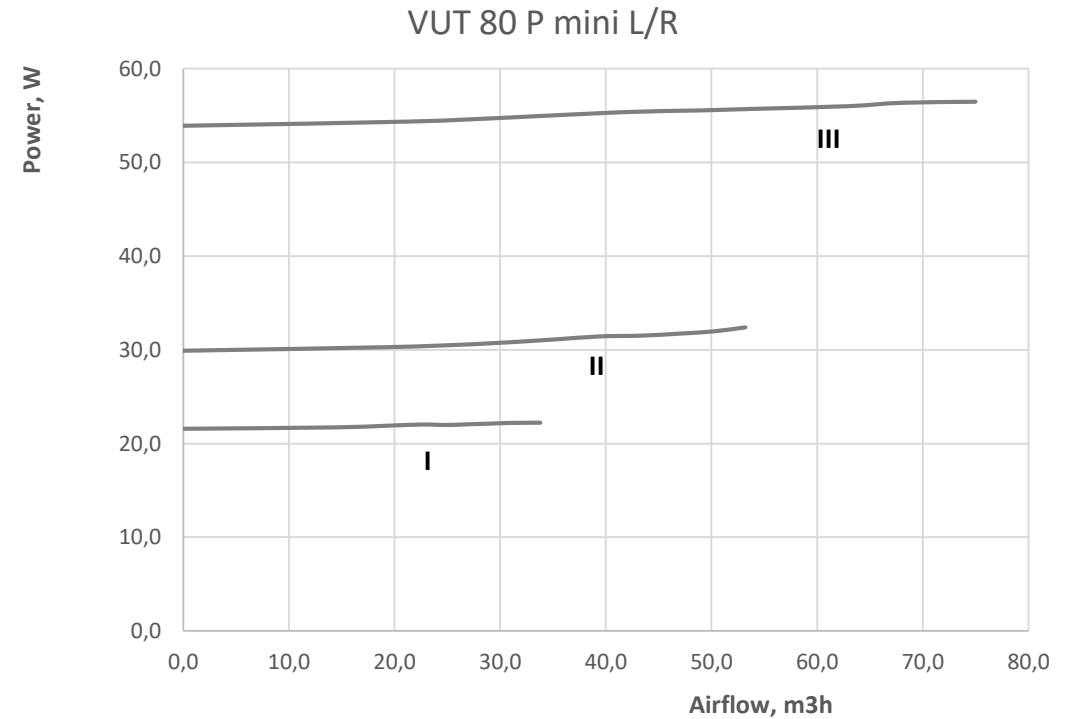
Model	VUT 80 P mini L/R			VUE 80 P mini L/R		
Speed	I	II	III	I	II	III
Voltage [V / 50 Hz]	1~ 230*			1~ 230*		
Total power of the unit, W	23	33	56	23	33	56
Maximum unit current, A	0,15	0,2	0,34	0,15	0,2	0,34
Air capacity, m <sup>3</sup> /h	40	60	80	40	60	80
RPM, min-1	1300	1950	2500	1300	1950	2500
Noise level at 3m, dB(A)	23	24	29	23	24	29
Maximum temperature of transferred air, °C	от -15 до +40			от -15 до +40		
Case material	aluzinc			aluzinc		
Insulation	15 mm PE foam film			15 mm PE foam film		
Filter: extract	G4			G4		
Filter: supply	G4			G4		
Replaceable filter*	FP 200x190x18 G4			FP 200x190x18 G4		
Size of connected air duct, mm	Ø125			Ø125		
Weight, kg	10			10		
Heat recuperating efficiency, [%]**	72 - 76			72		
Moisture recuperating efficiency, [%]**	-			up to 48		
Heat exchanger type	cross-flow			cross-flow		
Heat exchanger material	Polystyrene			Enthalpy		
<b>* Our R&amp;D is currently developing 110V [50-60Hz] version unit.</b>						
<b>**replaceable filter kits are specially ordered accessories and are available on a separate order.</b>						
<b>***Heat recovery efficiency is specified in compliance with the EN13141-7 EU norms.</b>						

# Airflow and power consumption

## Static pressure, Pa

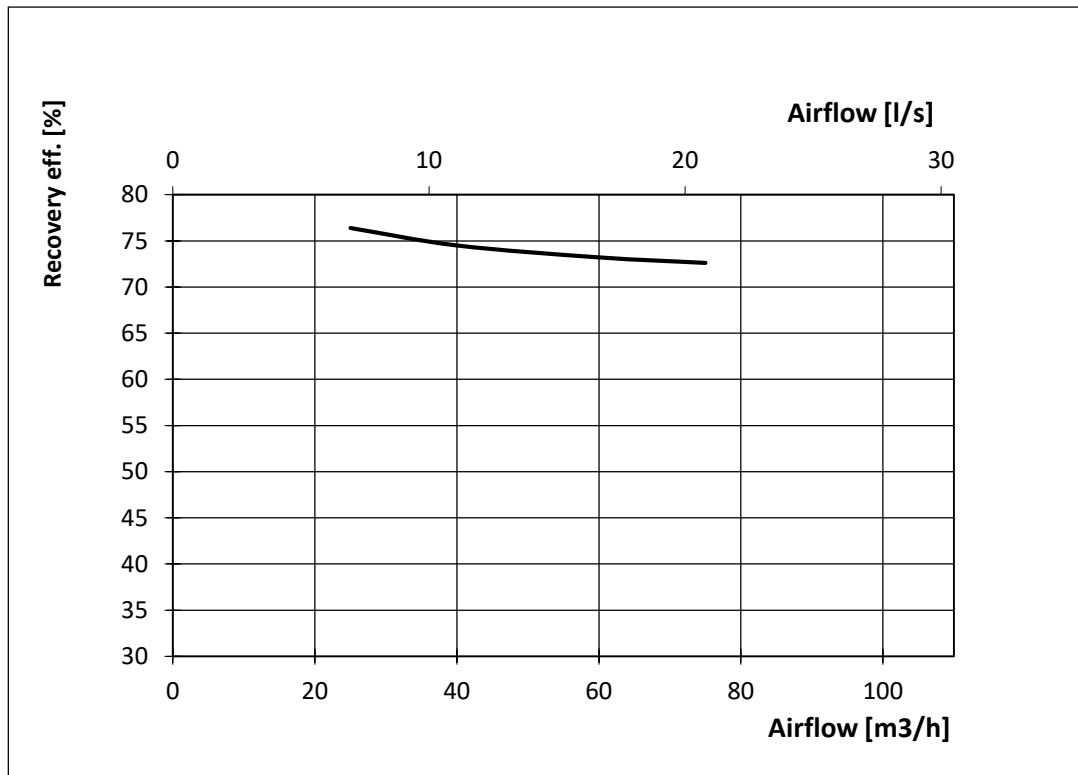


## Power consumption, W

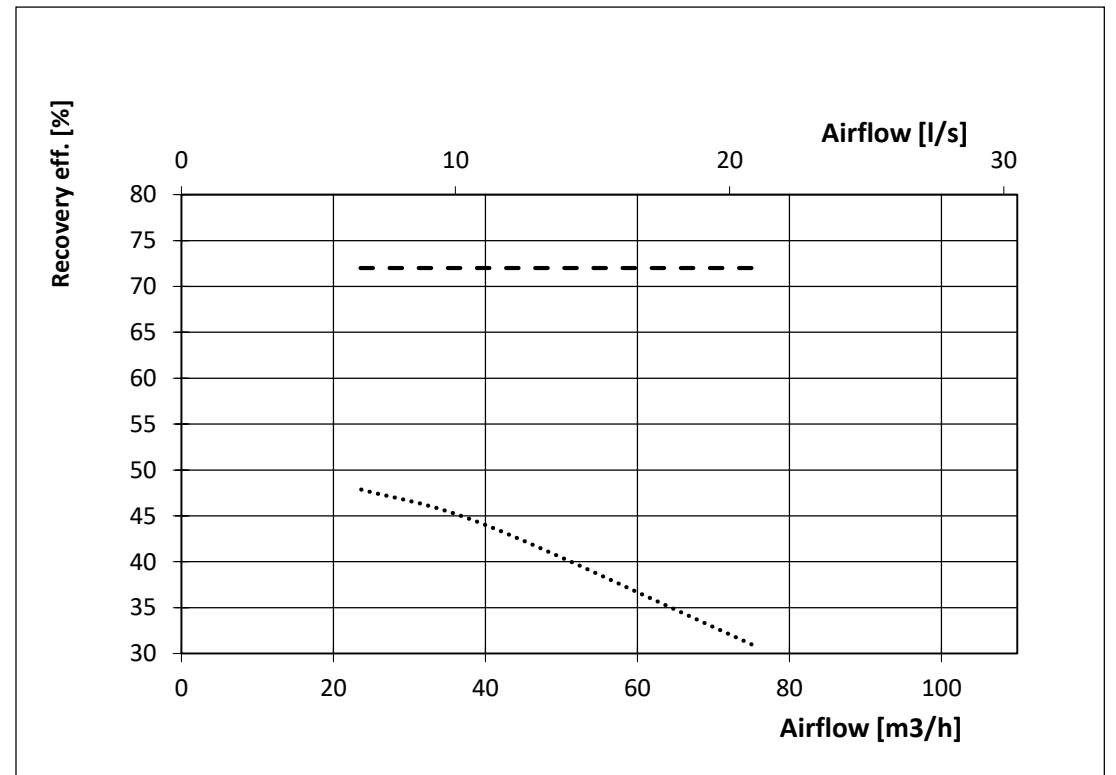


# Recovery efficiency (EN 13141-7)

## VUT 80 P mini L/R

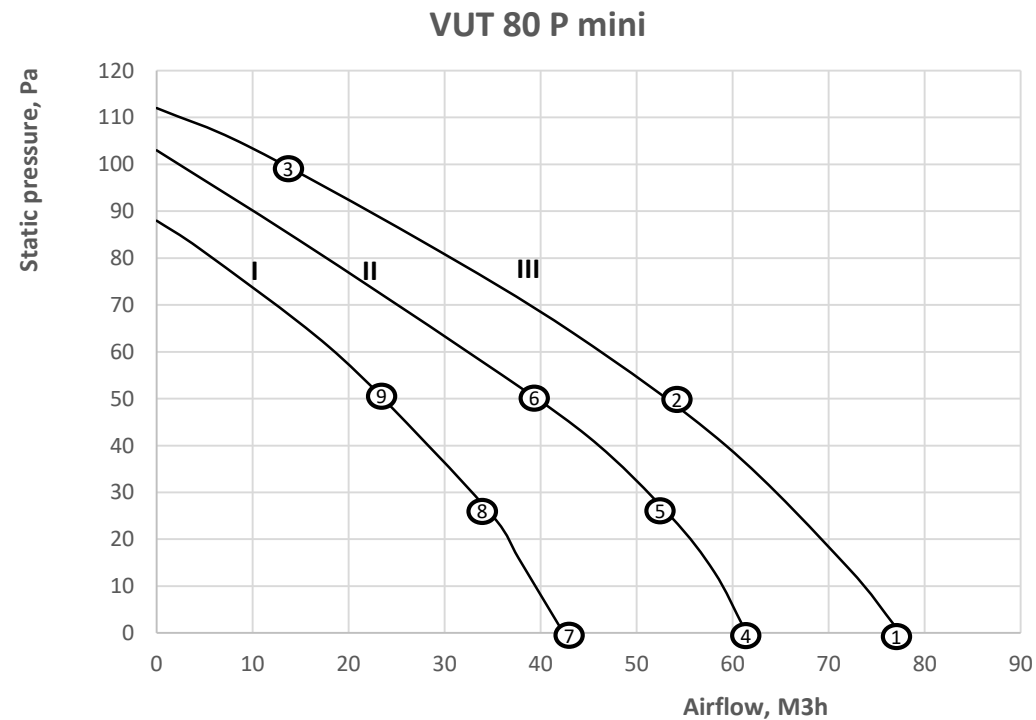


## VUE 80 P mini L/R



# Noise level

## Sound Data level, dB(A)



## Sound data level, dB(A)

VUT 80 P mini

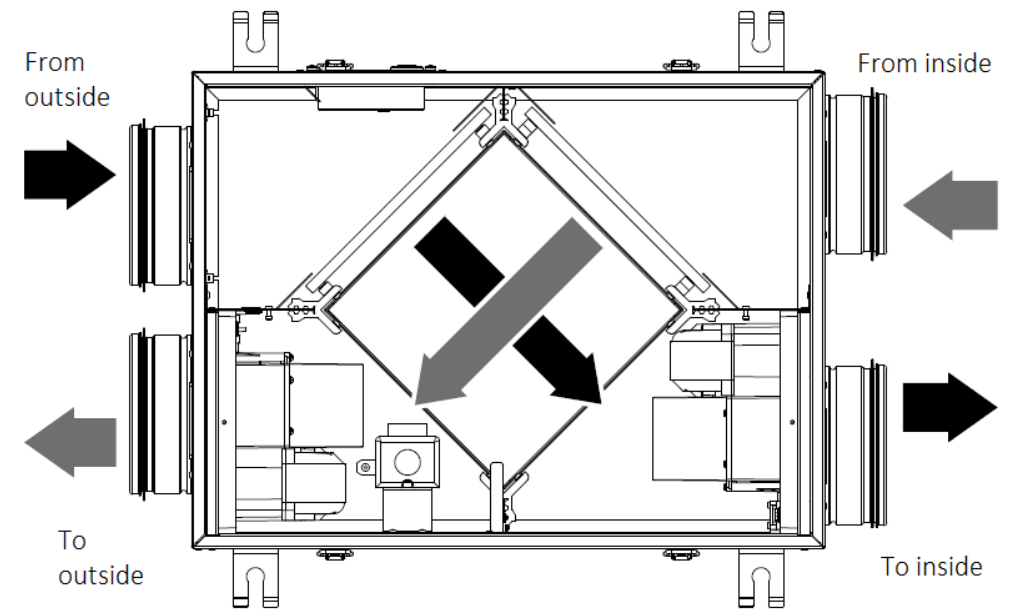
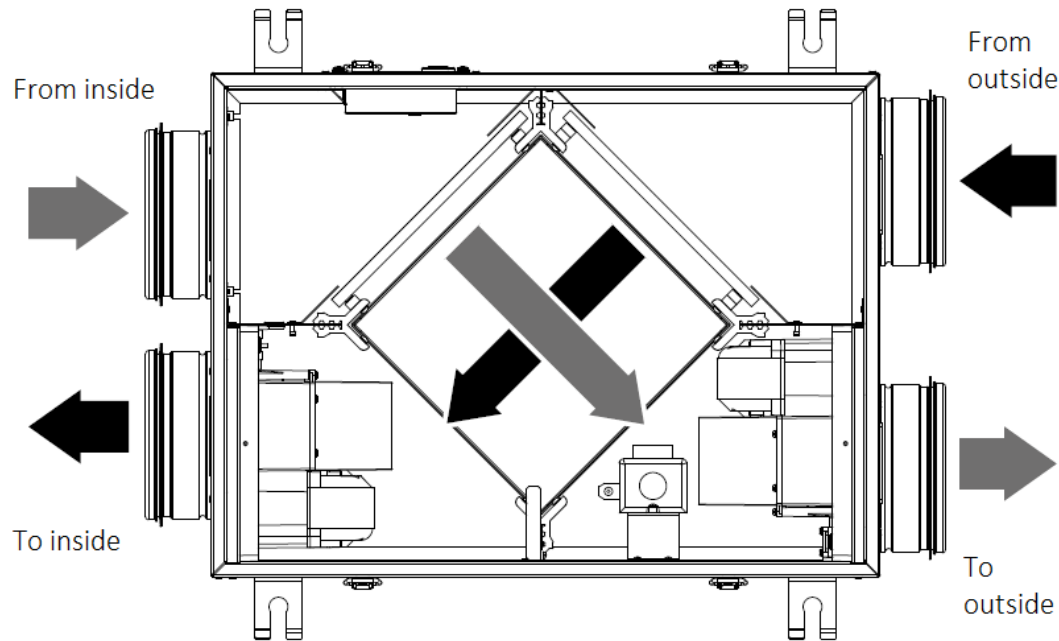
Sound-power level, A - weighted			General dB(A)	LpA, 3m dB(A)	LpA, 1m dB(A)
Point 1	LwA to environment	dB(A)	40	29	19
Point 2	LwA to environment	dB(A)	39	28	18
Point 3	LwA to environment	dB(A)	39	28	18
Point 4	LwA to environment	dB(A)	36	25	15
Point 5	LwA to environment	dB(A)	34	23	13
Point 6	LwA to environment	dB(A)	35	24	14
Point 7	LwA to environment	dB(A)	34	23	13
Point 8	LwA to environment	dB(A)	32	20	11
Point 9	LwA to environment	dB(A)	32	21	11

# Left and right version of VUT 80 P mini

VUT 80 P mini **L**

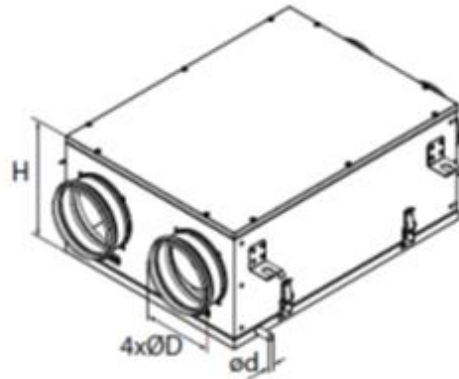
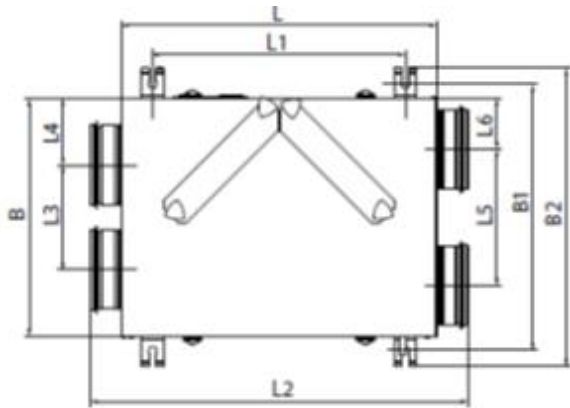
VUT 80 P mini **R**

bottom view

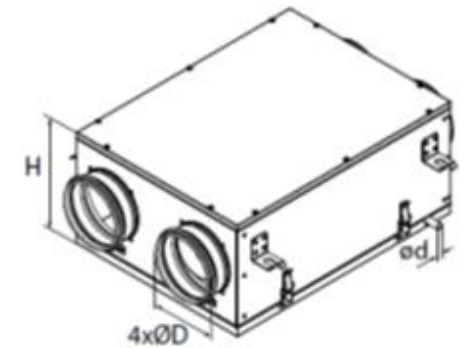
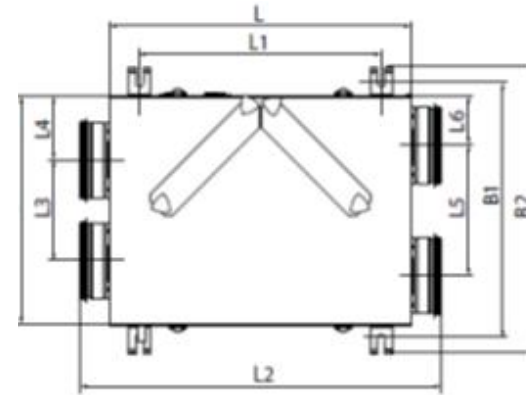


# Dimensions

VUT 80 P mini **L**



VUT 80 P mini **R**



Model	d	D	B	B1	B2	H	L	L1	L2	L3	L4	L5	L6
VUT 80 P mini	12	125	374	404	467	224	497	397	595	150	112	201	87



# Control A3



3 speed controller CDP-3 for wall mounting.

**FEATURES:** On/off switch and speed switch for multi-speed fans.

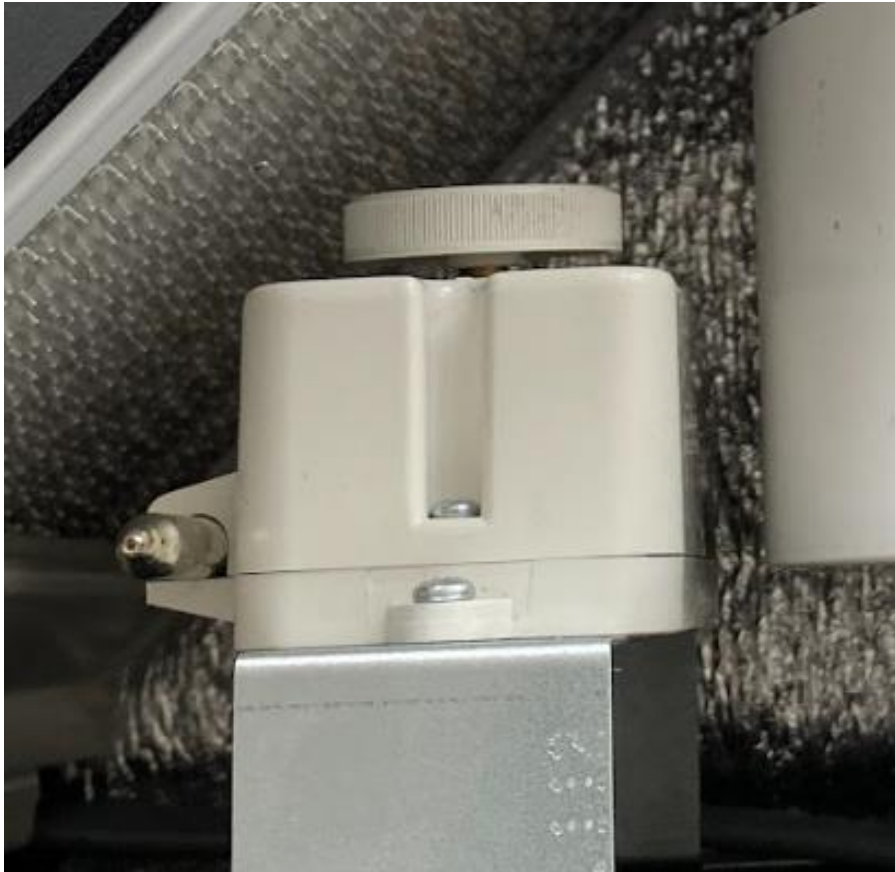
**DESIGN:**

- Casing made of high-quality plastic.
- Flush wall mounting.
- IP40 ingress protection rating.

**MOUNTING:**

- Indoor wall flush mounting in a mounting box.
- Suitable for installation in standard electric junction boxes.

# Thermostat



The integrated electronic frost protection system in **VUT 80 P mini** is used to prevent the heat exchanger freezing in cold seasons. In case of heat exchanger freezing danger communicated by the temperature sensor the supply fan is stopped to let warm extract air warm up the heat exchanger. After that the supply fan is turned on and the unit reverts to the normal operation mode.

**VUT 80 P W mini** is intended for **warm climate**, where the possibility of negative temperatures is excluded.

# VUT 80 P mini L/R appearance



# VUT 80 P mini L/R service panels removed



# VUT 80 P mini L/R service panels



Units with HRV and ERV heat exchangers has a service panels:

- with filter slots for quick filter replacement
- with built-in drain pans for condensate evacuation.

# Internal elements of VUT 80 P mini L/R

**Right version**

**Left version**

Supply fan  
Exhaust filter  
Heat exchanger  
Thermostat  
Supply filter  
Exhaust fan

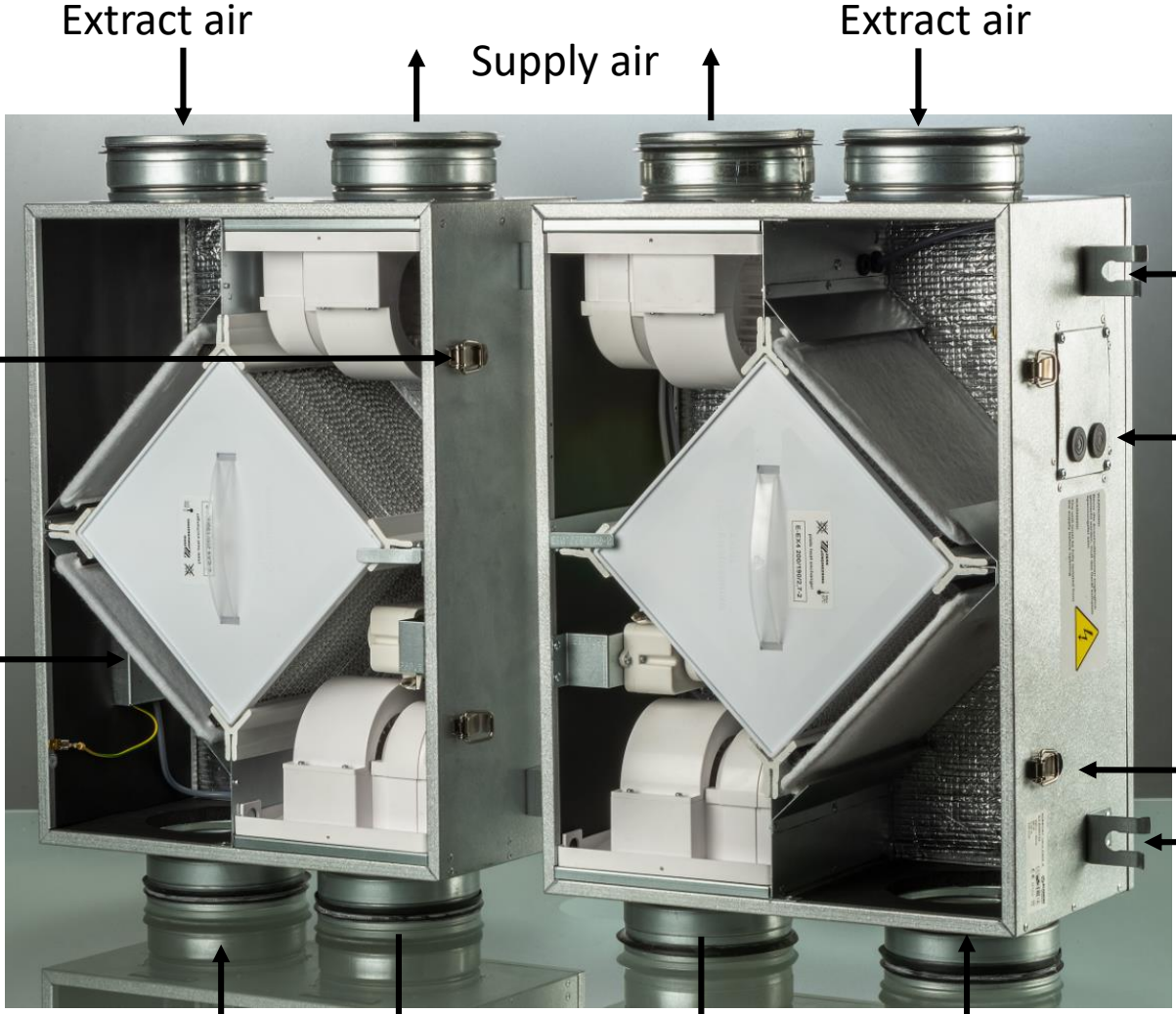


Supply fan  
Exhaust filter  
Heat exchanger  
Thermostat  
Supply filter  
Exhaust fan

# External elements of VUT 80 P mini L/R

*Right version*

*Left version*



Extract air

Supply air

Extract air

Hinge of the service panel

Mounting bracket

Terminal block

Terminal block

Hinge of the service panel

Mounting bracket

Intake air

Exhaust air

Intake air

# FANS with gravity valve against drafts

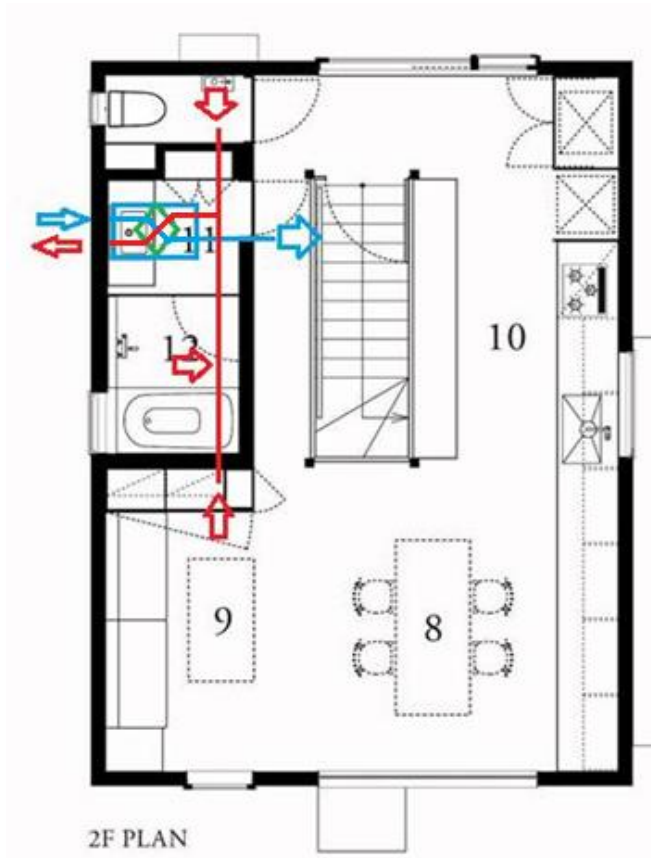


- Asynchronous motors are used for air supply and exhaust.
- Centrifugal impeller with forward curved blades ensures high pressure and low noise level.
- Integrated overheating protection.
- Dynamically balanced impellers.
- Equipped with ball bearings for longer service life.
- 1~ 230V 50Hz motors are currently applied.
- 1~ 110V 60Hz motors are currently under development.

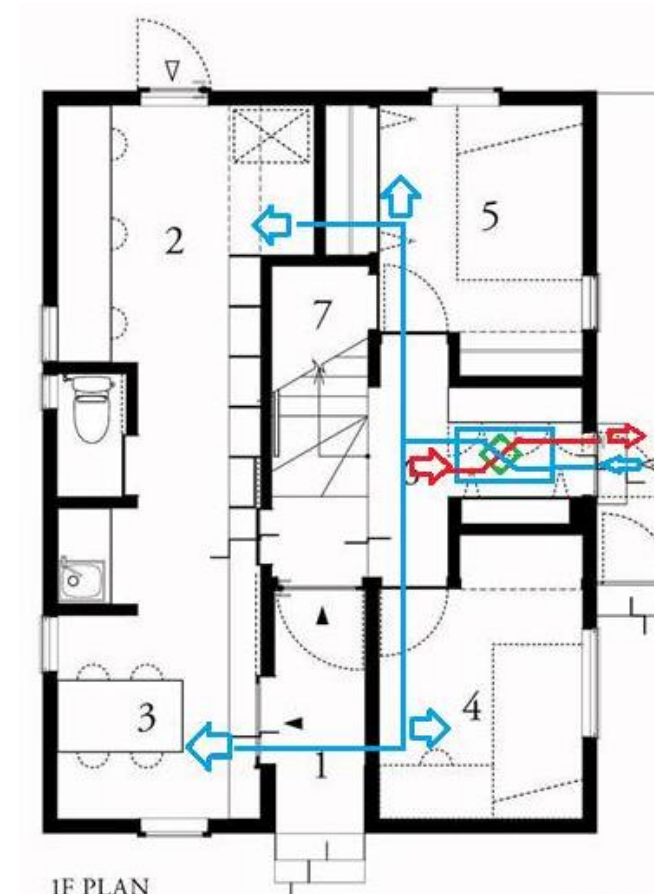


# Application for private premises

**As a decentralized solution**  
**Ground floor**

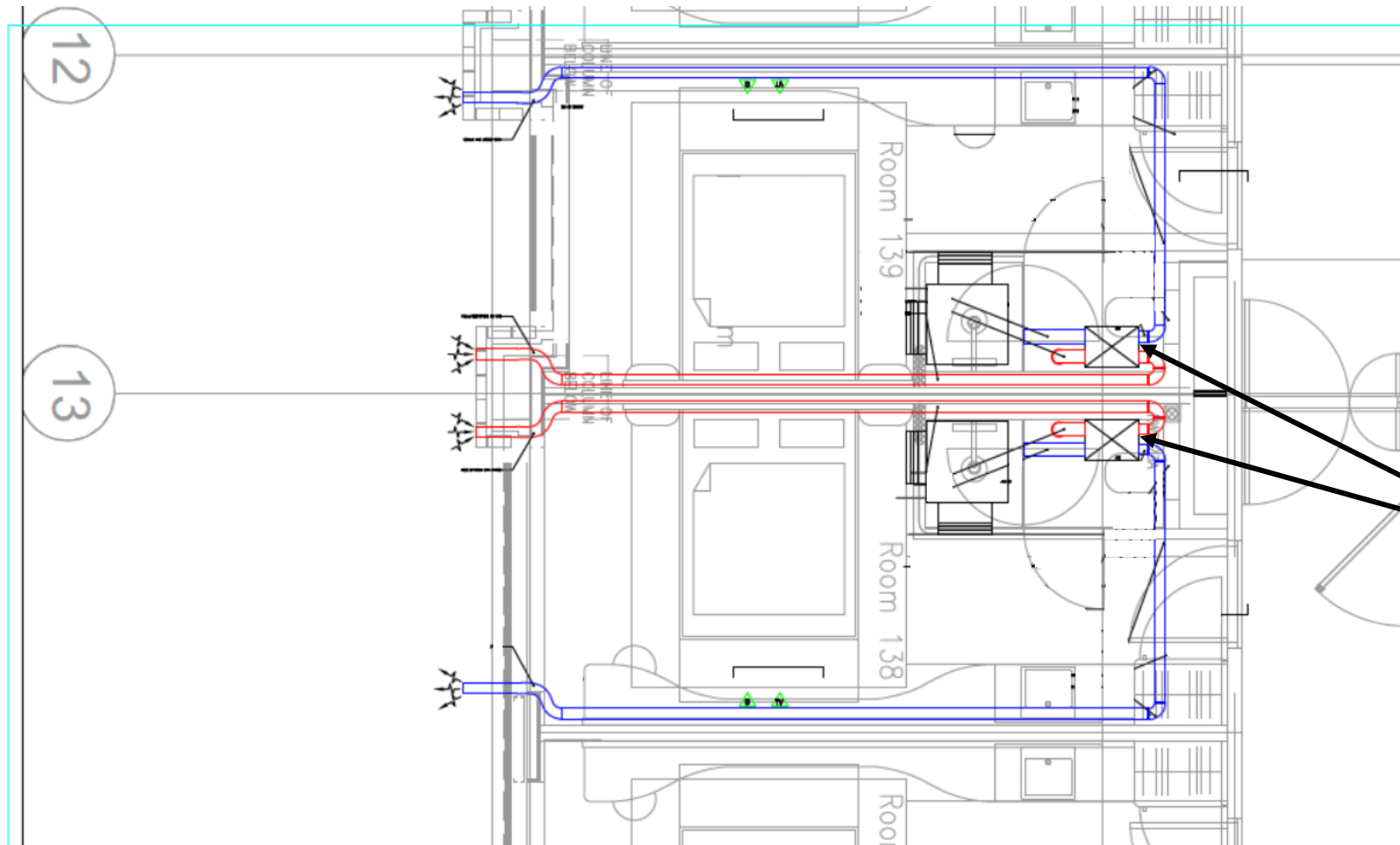


**As a centralized solution**  
**2<sup>nd</sup> floor**



# Hotels application

Decentralized solution for hotel rooms:



PROJECT: RUBY HOTEL ARAN STREET		
DRG TITLE: TYPICAL BEDROOM DETAILS		
 Phoenix Mechanical		
<small>Phoenix Mechanical Ltd 49 Park West Enterprise Centre, Lavery Avenue, Park West, Dublin 12.</small> <small>Tel: (01) 512 0083 E-Mail: info@phoenixmechanical.ie Web: www.phoenixmechanical.ie</small>		
Scale: 1:20 @ A1	Drawing Status:	
Drawn By: FZ	ISSUED FOR COMMENT	
Checked By: WB	Drawing No:	Revision
Date: 06/10/22	DE-900-01	00

This drawing is the property of Phoenix Mechanical. Copyright is reserved by Phoenix Mechanical and the drawing shall not be copied, reproduced or otherwise used without the consent of Phoenix Mechanical.

Left and right version of VUT(E) 80 P mini units are applied for mirrored hotel rooms

Thank you